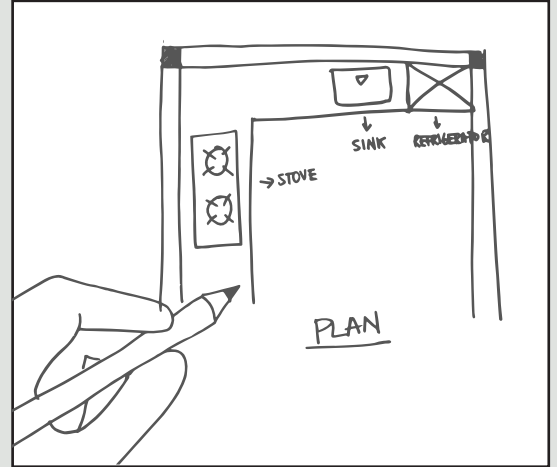


How to measure your countertop

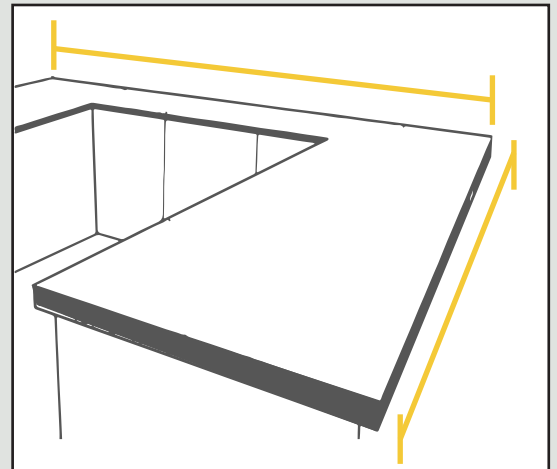
Sketch the room.

- Prior to measuring your countertops, create a rough diagram of your kitchen or bathroom.
- Sketch the layout of your cabinets on your diagram. Again, the dimensions do not need to be precise or to scale.
- If you are keeping your current appliances and fixtures, roughly draw your existing appliances, sinks, and faucets on the diagram.
- It is also helpful to note the type of sink, refrigerator, stove, and range found in your space.

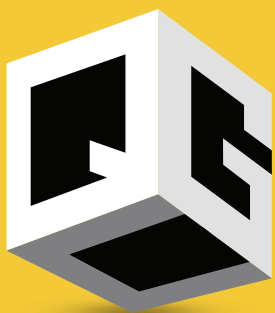


Measure the length of your existing countertops in inches.

- To measure the length of one section of countertops, run a measuring tape flush along the back edge of the section from one end to the other end. The beginning and end of a section is marked by a wall, edge of a cabinet, or an appliance
- Do not stop measuring when you reach a sink, but continue to measure beyond the sink until you reach the end of a cabinet, appliance, or a wall



Please send a picture of this Sketch and we will get back to you within 24 hours with your estimate.



**QUANTUM
GRANITE** CORP

✉ info@quantumgranite.com

☎ (780) 838-4419

www.quantumgranite.com

📞 📷 @ quantumgranite